

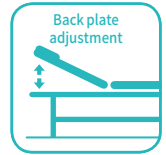
LBWZ-B1

EXAMINATION TABLE



LBWZ-B1

FEATURES AND HIGHLIGHTS

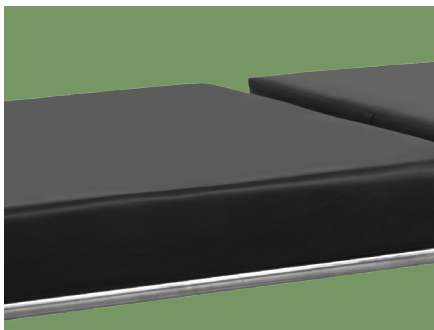


Technical parameters

▪ External size (LxWxH)	1900x600x680 mm
▪ Back-rest adjustment	0-65° (±10°)

Technical configuration

<input checked="" type="checkbox"/> Anti-slip bed feet cover	4 pcs
<input checked="" type="checkbox"/> Mechanical level to adjust back rest	1 set



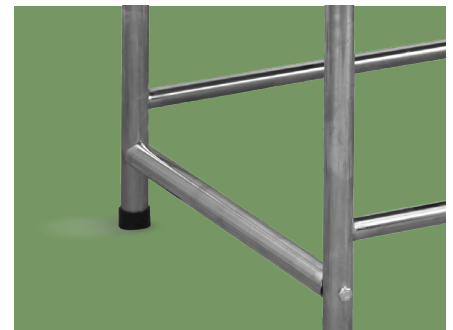
Leather

Yellow resistance, mildew resistance, bending resistance, 100,000 times wear resistance.



Sponge

6cm thickness, high-density foam, density 30 kg/m³.



Painting

11 Process epoxy painting, ASTM testing anti-bacterial, paint thickness 0.12mm, brightness 60°, paint can resist 50kg impact.



Metal material

Baosteel from Fortune Global 500. Panasonic Robotic ensure 360° full smooth wedding.



Frame

1.2-1.5 mm thickness stainless steel frame, 250kg bearing loading.



Feet cover

4 pcs anti-slip bed feet covers



NUMBER WIN

MEDICAL TECHNOLOGY



7x24

Online 24 Hours for Sales Service
Timely Response for Clients' Problems

+86 18021231901

Suzhou Number Win Medical Technology Co.,Ltd.

No. 35, Lehong Road · Zhangjiagang (Jiangsu) · China

export@number-win.com

www.number-win.com

As the circumstance of printing, the photos might have minor difference on color, tactile from real products.
As the update of design and improvement, parameters and outlook of products might change, thanks for understanding.



Company video



General catalogue