

NWC100

CHILDREN BED



NWC100

FEATURES AND HIGHLIGHTS

Technical parameters

▪ External L*W	1600*740*1040mm
▪ Bed Height	500mm
▪ Mattress Platform	1580*660mm
▪ Back-rest Adjustment	0-75°(±10°)

Technical configuration

☑ 5" Covered Castors	4pcs
☑ Full Length Side Rail	1set
☑ Intergrated Bed Ends	1set
☑ IV Pole	1pc
☑ IV Pole Prevision	4pcs
☑ Drainage Hook	2pcs



steels | Painting

Baosteel from Fortune Global 500
11 Process epoxy painting, ASTM testing anti-bacterial, paint thickness 0.12mm, brightness 60°, paint can resist 50kg impact

welding

Panasonic Robotic ensure
360° full smooth wedding

Punching platform, smooth surface no welding scar, bearing 250KG load. Option resin X-ray translucent platform



Powder coated steel frame, MDF material fire-proof plate. size of the head&foot board can be customized. With carton photograph



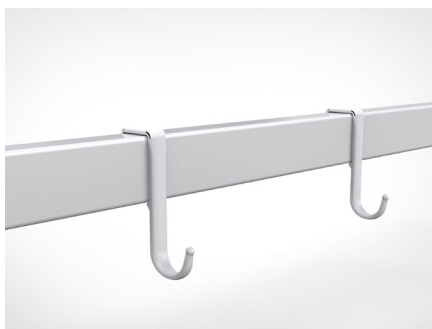
Foldable guardrail with protection handle, modern and beautiful, easy to install, easy to clean, anti-pinch, protect patient's safety



TPR tire no worn out after running 30KM, save anti-winding hard shell, united forming without bolts
Pass Dynamic test: Bearing 120kg run 30KM and pass obstacles 500time



Full SS IV pole, bearing 15kg



Plastic drainage hook, movable
Shoes holder: 800*400mm, adjustable
Oxygen cylinder rack - adjustable for anysize tank
Lifting pole - Bearing 765N force



NUMBER WIN

MEDICAL TECHNOLOGY

As the circumstance of printing, the photos might have minor difference on color, tactile from real products.
As the update of design and improvement, parameters and outlook of products might change, thanks for understanding.



7×24

Online 24 Hours for Sales Service
Timely Response for Clients' Problems

+86 18021239272

Suzhou Number Win Medical Technology Co.,Ltd.

No. 35, Lehong Road · Zhangjiagang (Jiangsu) · China

export@number-win.com

www.number-win.com



Company video



General catalogue