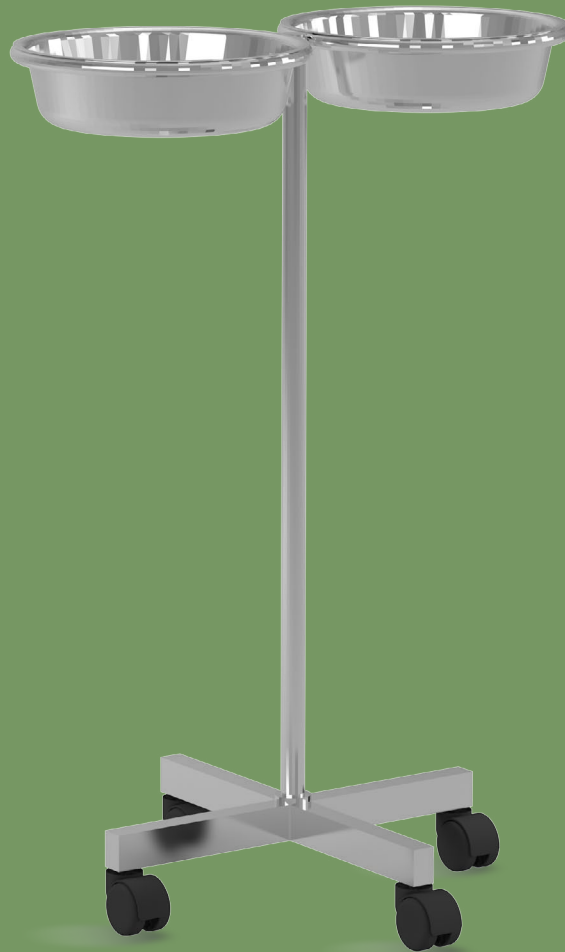


NWE004

TAINLESS STEEL

WASH BASIN (DOUBLE)



NWE004

FEATURES AND HIGHLIGHTS

Technical parameters

▪ Size	660*330*800±10mm
▪ Basin size	φ330mm±10mm



Design

The overall design is exquisite, simple installation, stable and durable.



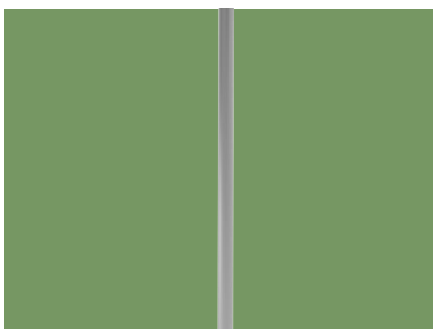
Material

Made from high-quality stainless steel, anti-corrosion and anti-rust.



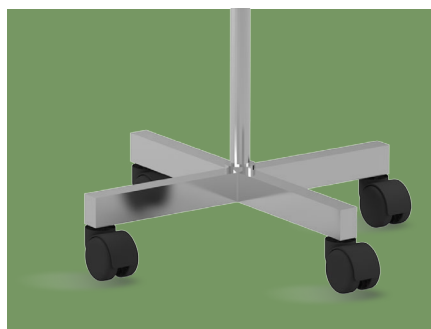
Wash basin

Separate design for basin and supporting ring, allowing for easy disposal of contents. Basin dimension: 330mm±10mm.



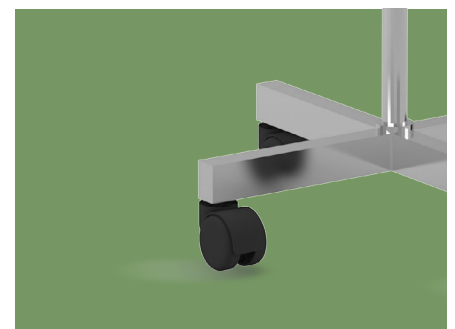
Column

φ22 stainless steel round tube, 0.6mm thick, providing high bearing capacity.



Base

Reinforced cross base, using 30*30 stainless steel square tube, stable and firm.



Castor

Four 2" castors (two with brake), 360° rotating and easy to move.



NUMBER WIN

MEDICAL TECHNOLOGY



7x24

Online 24 Hours for Sales Service
Timely Response for Clients' Problems

+86 18021231901

Suzhou Number Win Medical Technology Co.,Ltd.

No. 35, Lehong Road · Zhangjiagang (Jiangsu) · China

export@number-win.com

www.number-win.com

As the circumstance of printing, the photos might have minor difference on color, tactile from real products.
As the update of design and improvement, parameters and outlook of products might change, thanks for understanding.



Company video



General catalogue