

NWE401

COMMODE CHAIR



NWE401

FEATURES AND HIGHLIGHTS

Technical parameters

| | |
|--------------------------------------|------------|
| ▪ Chair height | 77cm |
| ▪ Width of sitting surface | 42cm |
| ▪ Length of sitting surface | 42cm |
| ▪ Leg width | 48cm |
| ▪ Leg Length | 49cm |
| ▪ Height of the seat from the ground | 39cm |
| ▪ Height of the Back-rest | 42cm |
| ▪ N.W. | 6.5kg |
| ▪ Package size | 88×53×60cm |



Design

Ergonomic and foldable, adapt for sitting and bathing, easy to use.



Material

Reinforced carbon steel material, pipe wall thickness 0.8mm, long service life, strong bearing force. Bearing capacity 120kg. Spray for surface, smooth and anti-rust.



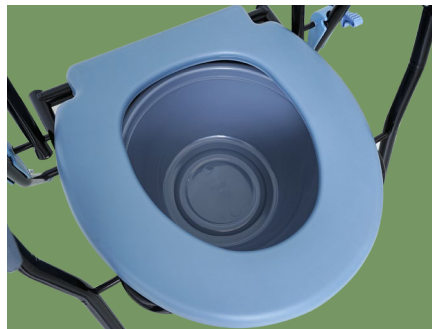
Structure

Folding design, which is stable and anti-slip, convenient for storage and save space.



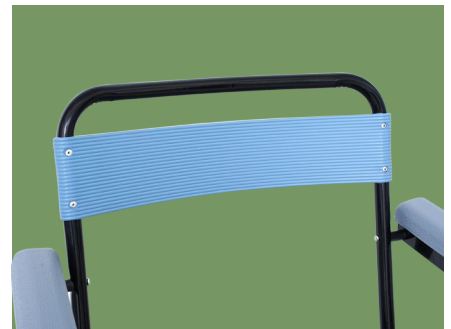
Armrest

PP material, anti-slip texture, convenient for getting up.



Seat board

PP seat plate, seat plate and toilet can be removed for easy cleaning.



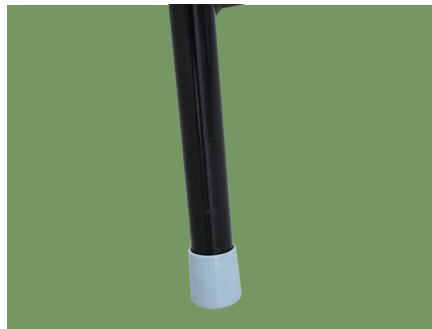
Back-rest

PP Back-rest, waterproof and easy to clean, with handle, easy to move.



Toilet

Plastic toilet with lid, stable and easy to install and clean.



Foot pad

The material is anti-slip and wear-resistant rubber.



Buckle

With fixed buckle, providing high safety.





NUMBER WIN

MEDICAL TECHNOLOGY

As the circumstance of printing, the photos might have minor difference on color, tactile from real products.
As the update of design and improvement, parameters and outlook of products might change, thanks for understanding.



7x24

Online 24 Hours for Sales Service
Timely Response for Clients' Problems

+86 18021231901

Suzhou Number Win Medical Technology Co.,Ltd.

No. 35, Lehong Road · Zhangjiagang (Jiangsu) · China

export@number-win.com

www.number-win.com



Company video



General catalogue